

LABEL-FREE BINDING ANALYSIS



MICROCALORIMETRY

MICROCAL SOFTWARE

PEAQ-ITC ANALYSIS

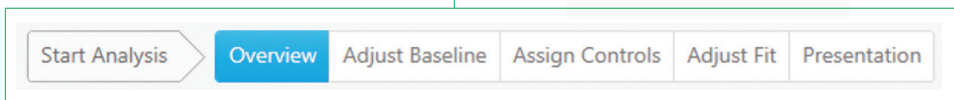
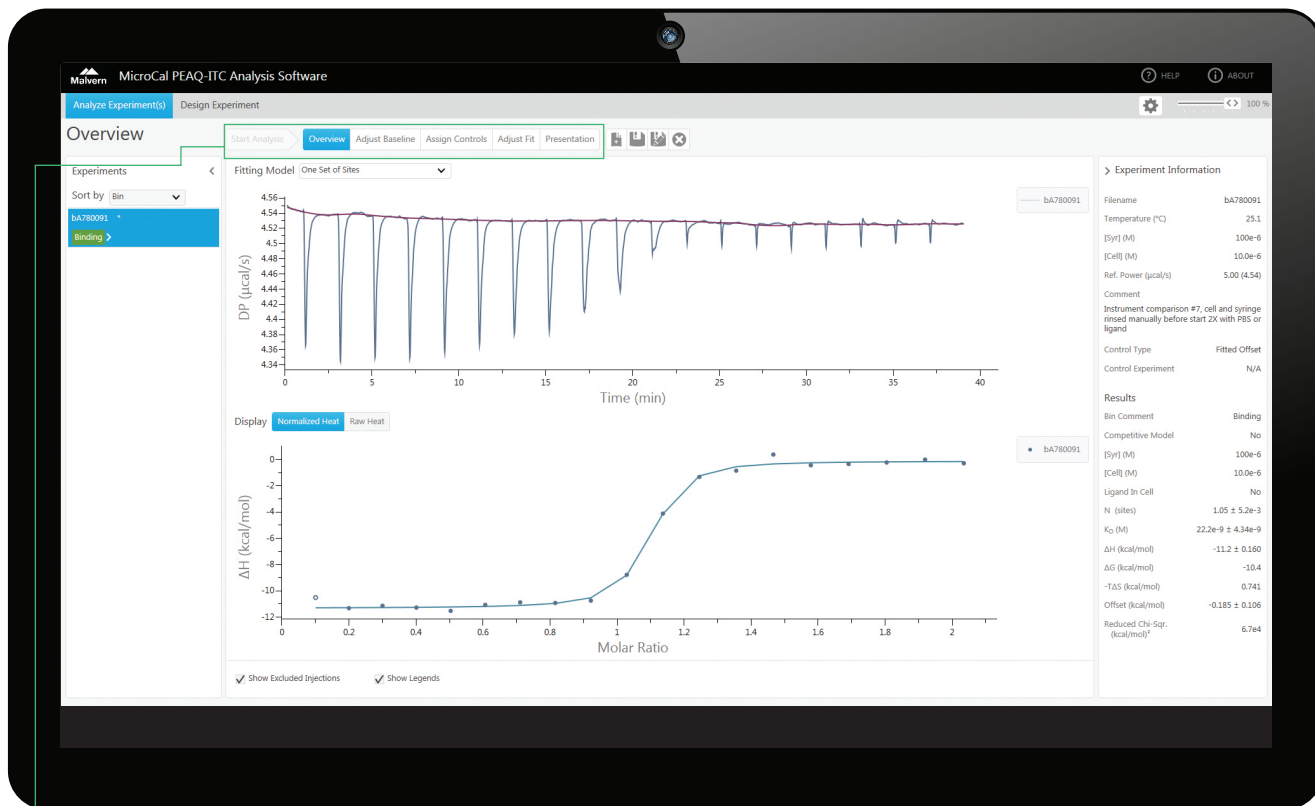
MICROCAL PEAQ-ITC ANALYSIS SOFTWARE

Introduction

The MicroCal PEAQ-ITC Analysis Software analyzes calorimetric data imported from ITC experiments quickly and easily. Data can be processed from both MicroCal PEAQ-ITC and MicroCal PEAQ-ITC Automated systems. It has never been simpler to import ITC experiments, assign control experiments, adjust baselines and integration ranges, fit binding models, and export the results as high quality images and tables.

User-friendly software for fast and accurate analysis

The all new data analysis software package offers experiment design simulation, batch evaluation of large data sets, automated assessment of data quality and a streamlined user interface that guides the user to final figures and presentation quality graphs quickly and easily.

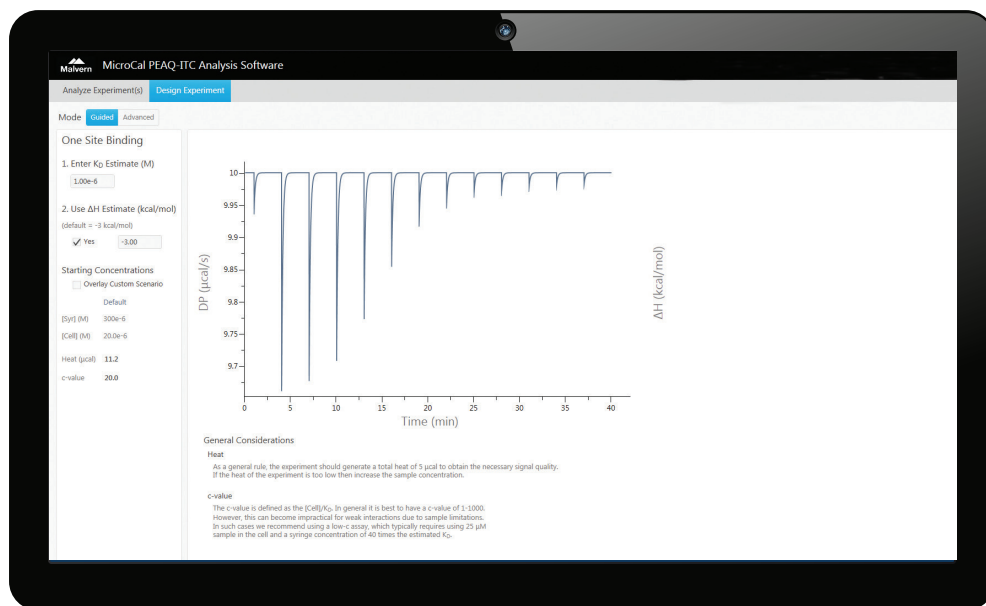


Step-by-step progress bar always lets you know where you are in the analysis process

Guided experimental design

- Guided and Advanced modes of operations
- Batch evaluation of large data sets
- Several experimental models to choose from
- Capability to save results as a method

Design experiment - Guided mode



Design experiment - Advanced mode



Supports many automated fitting models

- One Set of Sites
- Two Sets of Sites
- Dissociation
- Sequential Binding Sites
- One Set of Sites - SIM
- Enzyme Kinetics - Multiple Injections
- Enzyme Kinetics - Single Injection
- Competitive

Quality data triage

Automated assessment of data quality

The software automatically sorts the data into 1 of 4 groups for the one site model:

- Good quality data – Binding
- Good quality data - No binding
- Poor quality data – Check data
- Control experiment



Experiments	Sort by	Bin
bA780314	bin	Binding
bFE780321	bin	Binding
bE780322	bin	Binding
bFE780323	bin	Binding
hS780331	bin	Binding
hS780332	bin	Binding
hS780333	bin	Binding
hE780291	bin	No Binding
bE780301	bin	No Binding
test experiment 1	bin	Check Data
New Experiment	bin	Check Data
RefPDT30b	bin	Check Data
RefPDT40a	bin	Check Data

New features support common applications

- Control heats included in fitting process
 - Rapid, non subjective analysis for SAR, Hit Validation and Lead optimization
- Sample concentration can be included as a variable in fitting process
 - SAR and lead optimization and all detailed thermodynamic studies
- Automatic data qualification
 - New users and hit validation
- Intuitive experimental design and analysis of competition experiments
 - Facilitate measuring tight and weak binders

Fully automated analysis

- Automatic baseline with simplified baseline adjustment tool if needed
- Controls are automatically assigned
- Automated fitted offset capability for all experimental binding models
- Experimental controls are automatically subtracted saving time
- Any change to the analysis results automatically updates the fitting parameters.

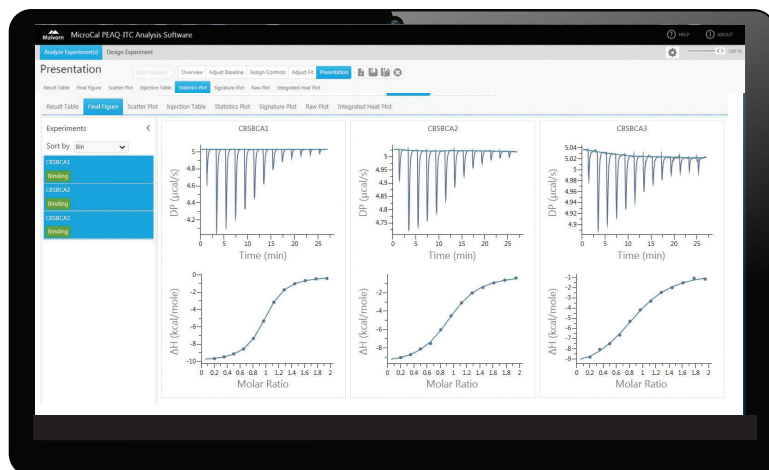
Many presentation graphs and plots to choose from



Statistics plot



Final figure





Malvern Instruments Limited
Groewood Road, Malvern,
Worcestershire, UK, WR14 1XZ

Tel +44 1684 892456
Fax +44 1684 892789

www.malvern.com

Malvern Instruments is part of Spectris plc, the Precision Instrumentation and Controls Company. Spectris and the Spectris logo are Trade Marks of Spectris plc.

spectris

All information supplied within is correct at time of publication.

Malvern Instruments pursues a policy of continual improvement due to technical development. We therefore reserve the right to deviate from information, descriptions, and specifications in this publication without notice. Malvern Instruments shall not be liable for errors contained herein or for incidental or consequential damages in connection with the furnishing, performance or use of this material.

Malvern and the 'hills' logo and MicroCal, are International Trade Marks owned by Malvern Instruments Ltd.

© 2015

MRK2180-01-EN-01

Material Relationships - distributor details

Distributore per l'Italia:

 **ALFATEST**
strumentazione scientifica

alfatest@alfatest.it
06 87465556/7

www.alfatest.it
www.alfatestbio.it
www.alfatestlab.it

