

everest biolabs

# Elevate your EV Research

Our solutions  
speed-up your EV  
isolation and analysis

## Automated EV isolation by Size Exclusion Chromatography



Ascent instrument

Automated 8-channel SEC



Apex SEC columns

High performance EV isolation

## Fast EV biomarker analysis



Atlas ELISA kits & Readers

Simple and reliable EV quantification

# Automate the Tedious. Focus on Discovery.

## Ascent Instrument

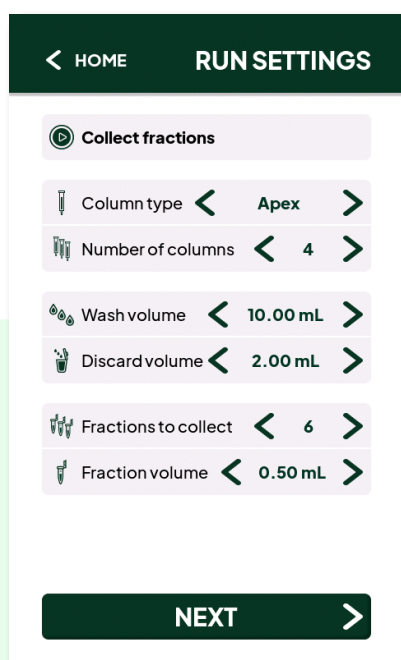
Automated, high-throughput EV isolation with SEC columns

- Run up to 8 columns in parallel
- Collect 12 fractions per column
- Wash up to 8 columns
- More cost effective than single column alternatives
- Open platform compatible with Apex and other SEC columns



## Programmable fraction collection

Optimize fraction collection for your application



- Wash volume 0-40 mL
- Discard volume 0-10 mL
- Number of fractions 1-12
- Fraction volume 0.1 - 2.0 mL\*

\*column type dependent

### ColumnSaver™

Keeps Columns Safe

No more racing the clock — ColumnSaver protects your columns from drying during idle periods, so they're ready when you are.

# Sharper Peaks. Cleaner Fractions.

## Apex SEC Columns



### High performance isolation

- Reproducible performance < 5% CV
- Sample volume 0.5–1.0 mL
- Available with multiple gel types
- Validated in culture, plasma, urine, serum & CSF

For more  
Apex data



### Optimized pore size for EV yield and recovery

Column Type	Purity	Yield	Pore-Size
Competitor	5.0	0.3	70 nm
Apex 4B	5.0	0.8	35 nm
Apex 6B	1.0	1.0	20 nm

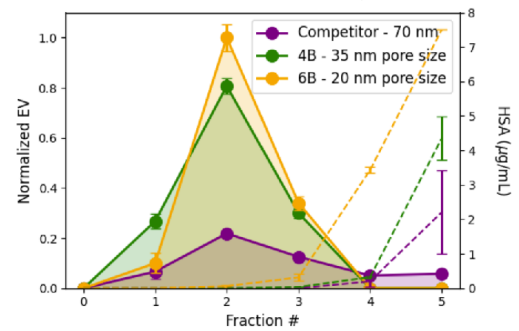
ideal for  
biofluids

**Apex 4B:** Optimized for high purity and lowest protein co-elution

ideal for  
culture

**Apex 6B:** Optimized for highest EV yield

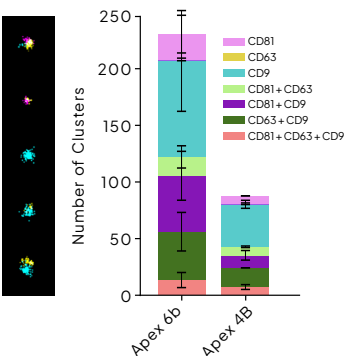
### EV numbers & purity



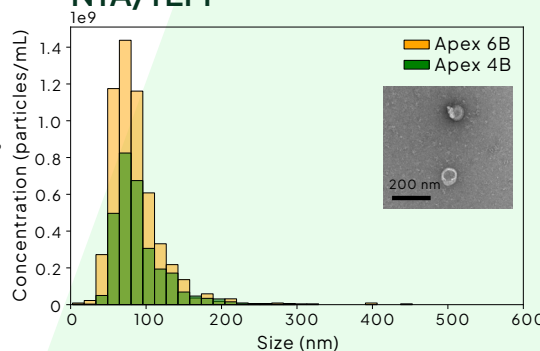
EV and human serum albumin elution profiles from 0.5 mL plasma, as measured by Atlas ELISA, after SEC with agarose gels of 70 nm, 35 nm, and 20 nm pore sizes.

### Apex 4B and 6B isolate the same EVs

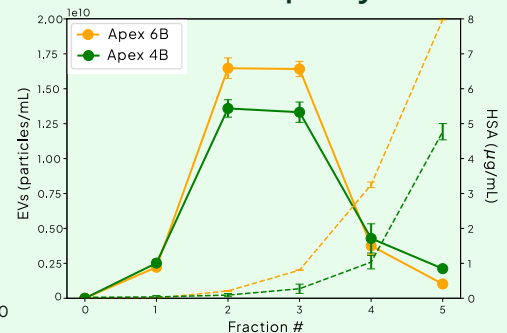
#### ONI



#### NTA/TEM



### EV numbers & purity



EV composition and size comparison. Super resolution imaging (ONI) and size comparison by NTA and TEM show that Apex 4B and 6B purify EVs with the same tetraspanin composition and size.

Apex 4B and 6B maintain purity and yield for 0.5–1.0 mL plasma samples in Atlas EV and HSA ELISA assays.

Our solutions  
speed-up your EV  
isolation and analysis

# Atlas ELISA Kits

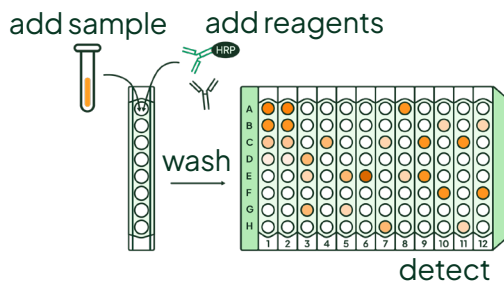
Easy and reliable EV analysis and purity assays

- Run direct from biofluid or SEC fractions
- Only 50  $\mu$ L of sample - no need to purify or concentrate
- Run 8 wells at a time or the full plate
- Intact human EV ELISA provides EV quantification
- HSA ELISA measures the purity of your sample
- Available in Absorbance or Lumi (Chemiluminescence) format

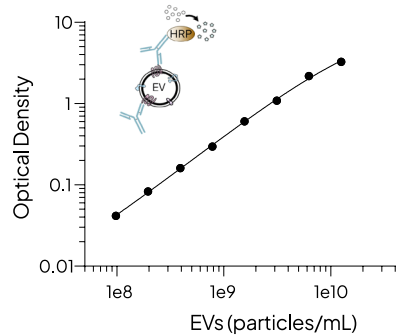


Rapid, high-performance readers available.

## 1 incubation step (15-minutes hands on time)



## Atlas EV ELISA



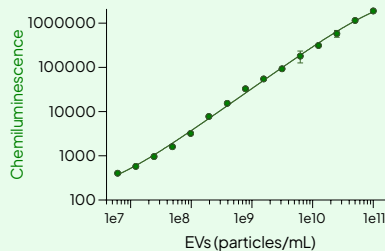
Validated in:

- Plasma
- Serum
- CSF
- Urine
- Cell culture media

LOD ~ 1e8 EVs/mL  
Dynamic Range 2+ logs

## Atlas Lumi ELISA

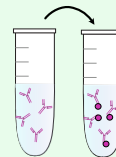
High-sensitivity,  
high-dynamic  
range ELISA for  
EV biomarker  
quantification



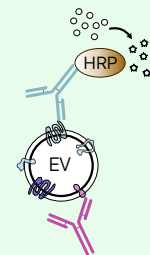
LOD ~ 1e7 EVs/mL  
Dynamic Range 4+ logs

## 1-step custom capture

Conjugate  
custom binder



Tetraspanin  
reporter



capture your  
custom target

Distributore per l'Italia:



Contattaci:  
alfatest@alfatest.it

alfatest.it  
alfatestbio.it  
alfatestlab.com

everestbiolabs.com